

Admiralty ECDIS Service

Electronic charts you can trust



Simplicity in a complex world

Imagine a **global** system of navigation that is safe, accurate and easy to manage.

The Admiralty ECDIS Service brings an end to unpredictable pricing, limited coverage and disjointed distribution whilst **making sense of** current **legislation**.

It combines ENC's and comprehensive ARCS coverage to give you the **safest, most accurate** electronic charts in the world in a seamless service.

The Admiralty ECDIS Service provides **official** electronic charts from a single source at a **fixed annual price**. New ENC's in the service are automatically included as they become available along with New Editions and weekly updates – all at no extra cost.

Easy to order, easy to manage and easy to use – the revolution has arrived.

Revolutionise navigation...



100% Official

The Admiralty ECDIS service is the first digital chart service in the world to supply a combination of electronic charts for ECDIS that can fully meet the IMO ECDIS performance standards. In areas where ENC are not yet available ARCS charts may, with flag state approval, be used in ECDIS for primary navigation rather than just a secondary aid to the paper chart.



Global Electronic Chart Coverage

ENC coverage already includes the Arabian Sea, Atlantic Ocean, Bahamas, Bay of Bengal, Belgium, Caribbean Sea, Cyprus, Egypt including Suez, Falkland Islands, Germany, Gibraltar, Greece, Gulf of Aden, India, Indian Ocean, Jamaica, Malta, Netherlands, Pacific Ocean, Portugal, Red Sea, Socotra, Somalia, South Africa, Southern Ocean, Sri Lanka, Spain, Canaries and Balearics, UK and Western Africa.

In early 2005, ENC coverage will be extended further to include Australia, Denmark, Estonia, Finland, France, Hong Kong, Latvia, Norway, Poland, Russia, Singapore and Sweden.

Unrivalled Chart Accuracy

The Admiralty ECDIS Service only includes official charts sourced directly from national hydrographic offices and compiled using the highest quality and most accurate data available allowing you to navigate safely and with confidence.

Fixed Annual Cost

This is absolutely unique; no other chart provider is prepared to do this at no extra cost to the mariner and no other digital chart service makes ENC cost management so straight-forward.



Superior update service

The Admiralty ECDIS Service is fully supported by the Admiralty Notices to Mariners service that commercial shipping has come to expect from the UKHO. All charts are completely up to date at the time of purchase and comprehensive chart corrections are issued every week at no extra charge. Chart corrections include all Notices to Mariners, New Editions, Replacement Charts and all Temporary and Preliminary Notices as well as any new relevant ENC's, all within the basic subscription price.

Fast, efficient chart maintenance

Chart corrections are supplied electronically. Charts can be quickly updated without error to provide fast, efficient, cost-effective chart maintenance.

Flexibility

Every Admiralty ECDIS Service customer is provided with a complete set of Base disks containing every ENC and ARCS chart available within the service. Access is provided by special folio 'unlock' (permit) keys, allowing you to carry global coverage whilst only paying for the level of folio coverage you require. Significantly, this allows the flexibility to upgrade coverage during a licence period.

Admiralty ECDIS Service Folios

The Admiralty ECDIS Service is available in a tried and tested folio format, enabling the UKHO to automatically add new ENC's to your chart holdings as they become available. This means that you can be certain of always having the latest ENC's within the service at your requested level of coverage.

Geographic areas

Folio coverage in the Admiralty ECDIS Service is provided in 33 geographic areas based on key shipping routes. Each area contains ENCs where available together with comprehensive ARCS coverage.

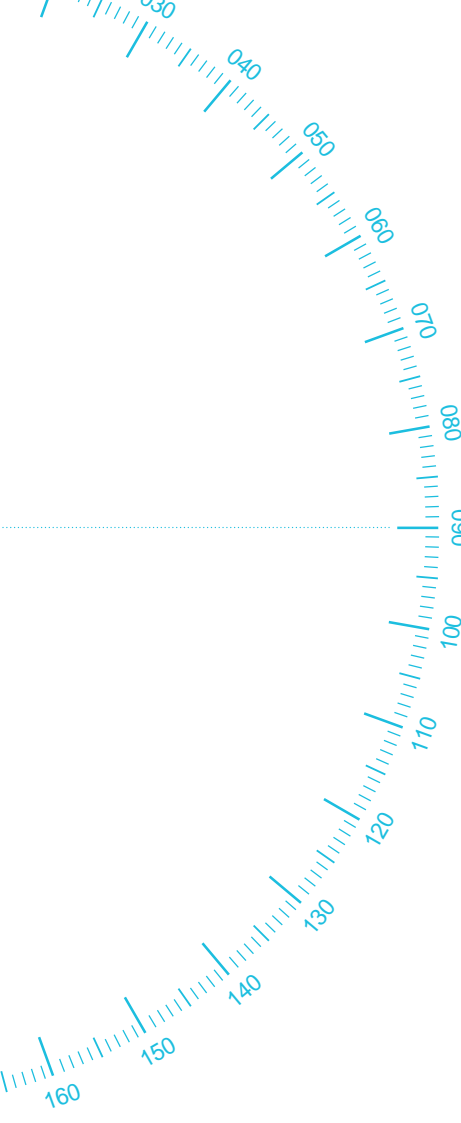


No. Folio Description

- 1 English Channel
- 2 UK East Coast
- 3 Ireland & UK West Coast
- 4 W Approaches & South to the Canaries
- 5 Belgium, Netherlands & Germany
- 6 Norway & W Denmark to Skagerrak
- 7 The Baltic
- 8 Bay of Biscay
- 9 Mediterranean West
- 10 Mediterranean East
- 11 Aegean & Black Sea
- 12 Red Sea, Arabian Sea & NW Indian
- 13 Oman & the Persian Gulf
- 14 Bay of Bengal to Sunda Strait
- 15 West Africa to Madagascar
- 16 East Coast South America
- 17 Caribbean

No. Folio Description

- 18 Gulf of Mexico
- 19 United States East Coast
- 20 Eastern Canada
- 21 Greenland to Faeroes
- 22 Alaska to Vancouver & Seattle
- 23 West Coasts USA & Central America
- 24 West Coast South America
- 25 Pacific
- 26 Japan, Korea & Russia
- 27 China Seas & Philippines
- 28 East Indies
- 29 New Guinea to Vanuatu
- 30 Australia
- 31 Antarctica
- 32 Norway to Russia
- 33 The Arctic



Operational folios

Within each geographic area there are up to **three separate levels of chart coverage** enabling you to match the number of charts carried to your specific operational requirements, making navigating with ENCs flexible and cost-effective.

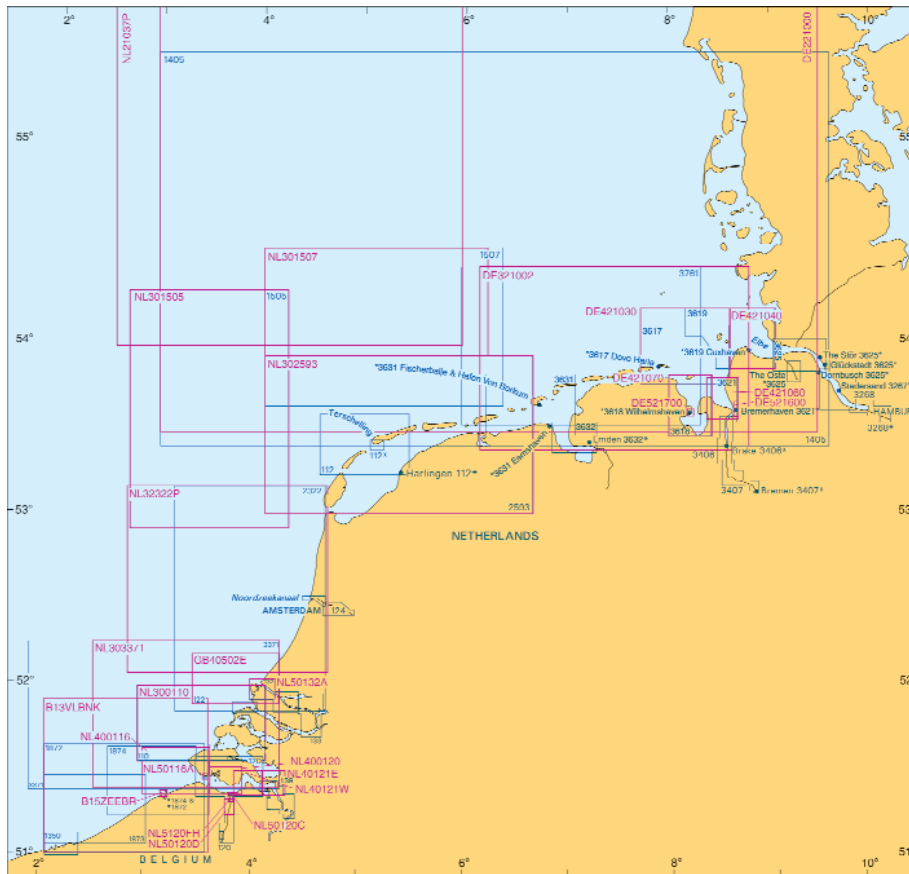
1. The Transit Folio containing the ENCs and ARCS charts required for safe transit, including principal ports, primary routes, bunkering ports and ports of refuge and excluding all other charts (for a graphical example of the level of coverage, please refer to the diagram on page 6).

2. Standard Folio containing the ENCs and ARCS charts required for operational use, including all key ports and approach charts. Remote anchorages, ports of less than 10 meters in depth, naval bases, ports where port calls are few, bulk cargo only ports, low throughput container ports, very small crude oil loading ports and low volume oil product ports are all excluded (for a graphical example of the level of coverage, please refer to the diagram on page 7).

3. Full Folio contains all ENCs and ARCS charts available for the geographic area (for a graphical example of the level of coverage, please refer to the diagram on page 8).

The ENC content in each folio is increasing rapidly as the UKHO actively seeks to extend coverage through close cooperation with other official producers of ENCs. A complete list of charts for each folio is published each week via the Admiralty Digital Catalogue (www.ukho.gov.uk) and through the Admiralty Notices to Mariners service. Alternatively contact your Admiralty distributor for latest information.

Example 3. Admiralty ECDIS Service Area 5 Full folio ~ Belgium, Netherlands & Germany.



Full Folio: Every ENC and ARCS chart available in the Admiralty ECDIS service for a geographic area.

Type	Number	Description	Type	Number	Description
ENC	B13VLBNK	Flemish Banks	ARCS	122	Approaches to Europoort and Hoek van Holland
ENC	B15ZEEBR	Zebrugge Harbour	ARCS	124	Noordzeekanaal including Ijmuiden, Zaandam and Amsterdam
ENC	DE221000	German Bight	ARCS	132	Nieuwe Waterweg, Nieuwe Maas, Oude Maas and Europoort - Hoek van Holland to Rotterdam
ENC	DE321002	Waters south of Helgoland	ARCS	133	Nieuwe Maas, Oude Maas, Noord and Dordtsche Kil - Rotterdam to Moerdijk
ENC	DE421030	Jade & Weser Approach	ARCS	139	Valkenisse to Antwerp
ENC	DE421040	Elbe - Northern Part	ARCS	420	Gradyb
ENC	DE421045	Kiel Canal	ARCS	1350	Dunkerque and Approaches
ENC	DE421060	Weser - Northern Part	ARCS	1405	Terschelling to Esbjerg
ENC	DE421070	Jade	ARCS	1507	Friesland Junction to GW/EMS
ENC	DE521420	Cuxhaven	ARCS	1546	Zeegat van Texel and Den Helder Roads
ENC	DE521600	Bremerhaven	ARCS	1872	Dunkerque to Vlissingen
ENC	DE521700	Wilhelmshaven	ARCS	1873	Dunkerque to Oostende
ENC	GB40502E	Approaches to Europoort	ARCS	1874	Westerschelde Oostende to Westkapelle
ENC	NL21037P	Doggerbank to East Friesland TSS	ARCS	1875	Die Jade to Norderpiep including Helgoland
ENC	NL300110	Westkapelle to Maasvlakte	ARCS	2322	Goeree to Texel
ENC	NL301505	West Friesland TSS/Off Botney Ground	ARCS	2469	Nord-Ostsee-Kanal
ENC	NL301507	Friesland Junction/East Friesland TSS	ARCS	2593	Texel to Borkum
ENC	NL302593	Off Texel TSS to Westerems	ARCS	3267	The Elbe - Krautsand to Schulau
ENC	NL303371	North Hinder / Eurogeul / Wester Schelde	ARCS	3268	The Elbe - Schulau to Hamburg
ENC	NL32322P	Noordwijk to Off Texel TSS	ARCS	3371	West Hinder and Outer Gabbard to Vlissingen and Scheveningen
ENC	NL400116	Approaches to River Westerschelde	ARCS	3406	The Weser - Nordenham to Elsfleth
ENC	NL400120	Wschelde Vlissingen Terneuzen	ARCS	3407	Die Weser - Elsfleth to Bremen
ENC	NL40110A	Approaches to Roompotsluis	ARCS	3617	Approaches to the Jade and Weser
ENC	NL40110B	Approaches from Slijkgat to Stellendam	ARCS	3618	The Jade - Inner Part
ENC	NL40121E	Wschelde Baalhoek-Antwerpen	ARCS	3619	The Elbe - Scharhorn Riff to Medemgrund
ENC	NL40121W	Wschelde Terneuzen-Baalhoek	ARCS	3621	The Weser - Robbennordsteert to Nordenham including Bremerhaven
ENC	NL401546	Den Helder Roads/Zeegat Texel	ARCS	3625	The Elbe - Belum to Krautsand
ENC	NL50116A	Flushing (Vlissingen)	ARCS	3631	Entrance to the Ems
ENC	NL50120A	Breskens	ARCS	3632	The Ems - Dukegat to Pogum
ENC	NL50120B	Braakmanhaven	ARCS	3761	Borkum to Helgoland
ENC	NL50120C	Terneuzen Anchorage	ARCS	3766	Approaches to Esbjerg including Horns Rev
ENC	NL50120D	Kanaal Terneuzen-Gent	ARCS	3767	Helgoland to Romo
ENC	NL50120G	Sloehaven (Vlissingen Oost)			
ENC	NL50122A	Scheveningen Harbour			
ENC	NL50132A	Rotterdam Europoort Maasvlakte			
ENC	NL5120FH	Terneuzen			
ENC	NL51546A	Den Helder			
ARCS	110	Westkapelle to Stellendam and Maasvlakte			
ARCS	112	Terschellinger Gronden to Harlingen			
ARCS	120	Westerschelde - Vlissingen to Baalhoek and Terneuzen-Gent Canal			

Further Information

For more information or to find out if you qualify for a free of charge three month Admiralty ECDIS Service trial, please contact your Admiralty Distributor.

A full list of Admiralty Distributors is available from the UKHO web site at

www.ukho.gov.uk/ecdis_service/distributors.

Alternatively contact the UKHO Helpdesk:

Tel: +44 (0) 1823 723366

Fax: +44 (0) 1823 323753

E-mail: helpdesk@ukho.gov.uk

An unrivalled reputation for quality and excellence

The United Kingdom Hydrographic Office (UKHO) is one of the world's leading hydrographic authorities and publisher of the renowned Admiralty chart and publication series.

The UKHO has an established reputation for cartographic excellence that spans more than 200 years and performs an essential role in supporting the safety of life at sea.

Internationally recognised as producing some of the highest quality navigational data in the world, the UKHO provides full and official coverage of the world's shipping routes.

A complete Navigational Package

An ever-expanding range of digital products and services complements the UKHO's comprehensive portfolio of over 3300 traditional navigational charts and 220 supporting nautical publications. Admiralty digital and paper products are both maintained to exactly the same levels of accuracy to provide a fully consistent, coherent package that cannot be equalled.

With a wealth of experience of charting the world's oceans, UKHO's Admiralty Charts and Publications provide the optimum in safe navigation.



For more information about Admiralty products, visit our website

www.ukho.gov.uk

The United Kingdom Hydrographic Office, Admiralty Way, Taunton,
Somerset, TA1 2DN, United Kingdom.

Tel: +44 (0) 1823 723366 Fax: +44 (0) 1823 323753